

**ADDENDUM 1
REQUEST FOR PROPOSAL**

**ENGINEERING DESIGN & SUPPORT SERVICES FOR
THE SOQUEL CREEK WATER DISTRICT'S
COUNTRY CLUB WELL REPLACEMENT WELL AND
1,2,3-TRICHLOROPROPANE REMOVAL
WATER TREATMENT PLANT PROJECT**

August 26, 2020



Taj Dufour
Engineering Manager

This document is Addendum 1 to Soquel Creek Water District's (District's) Request for Proposal (RFP) for **Engineering Design & Support Services for the Soquel Creek Water District's Country Club Well Replacement and 1,2,3-Trichloropropane Removal Water Treatment Plant Project**. The addendum includes clarifications of the proposal requirements and the topographic map of the site.

1. CLARIFICATION

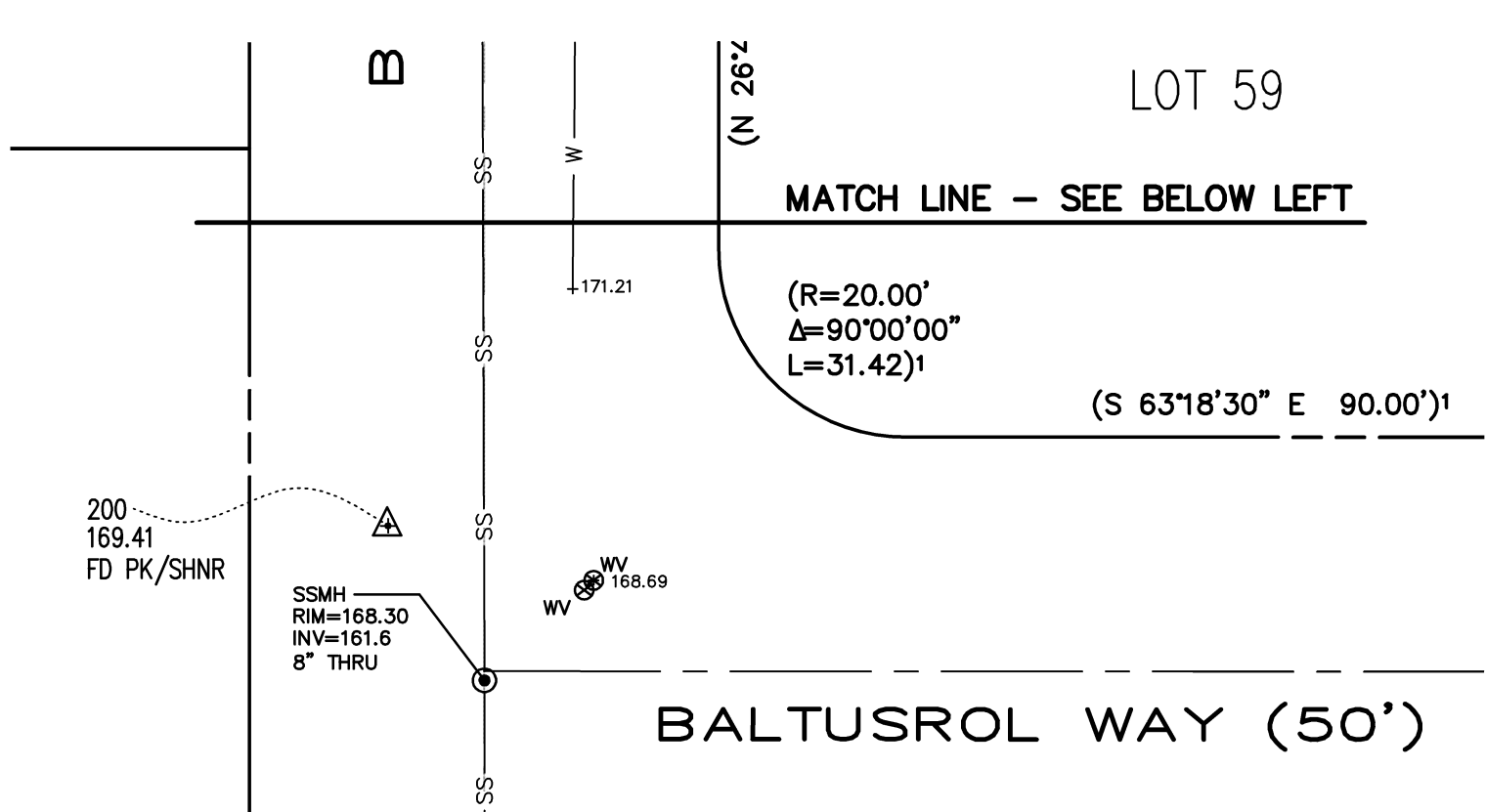
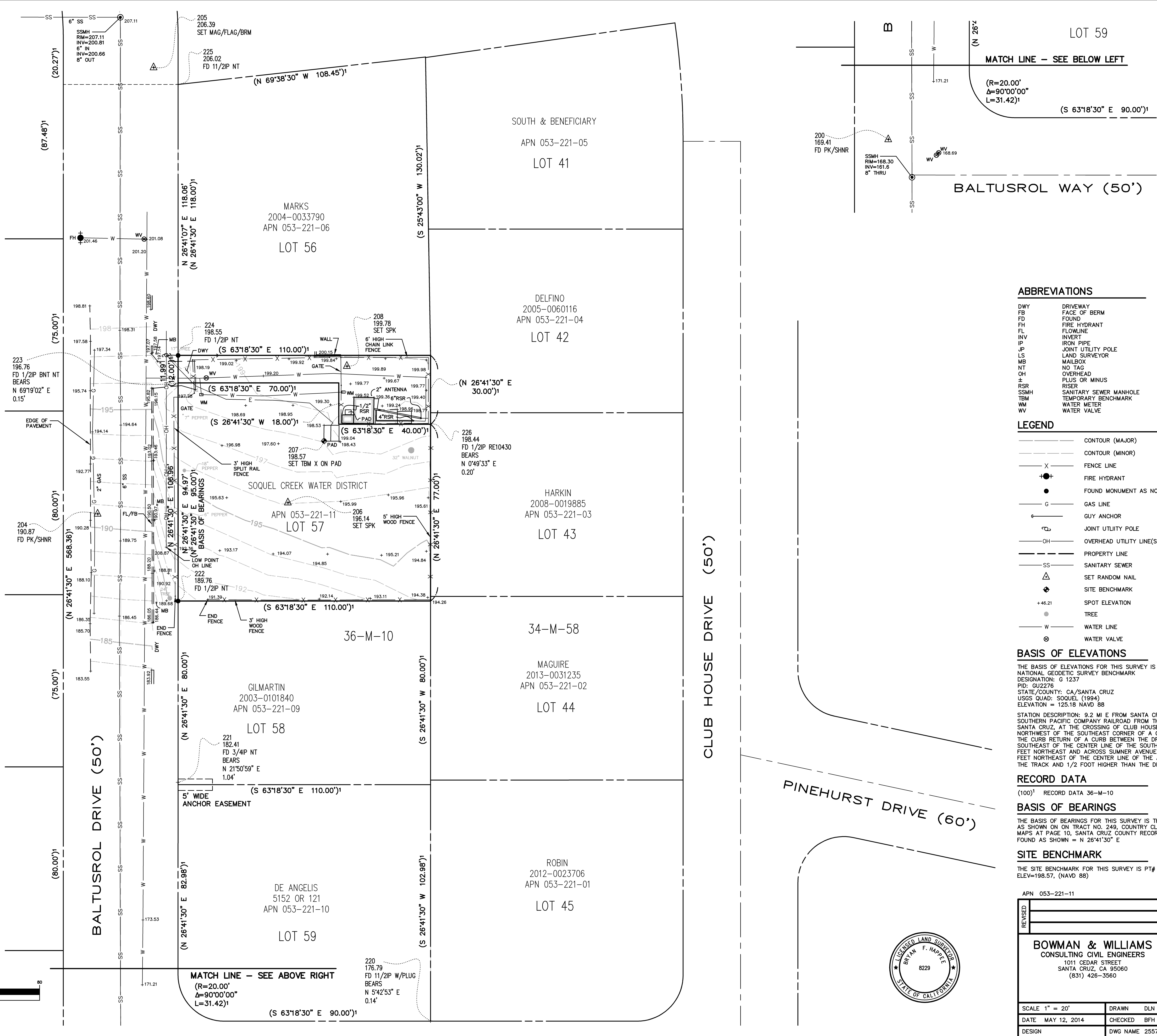
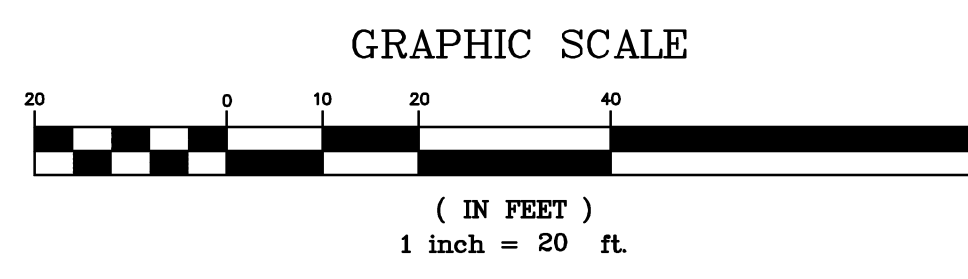
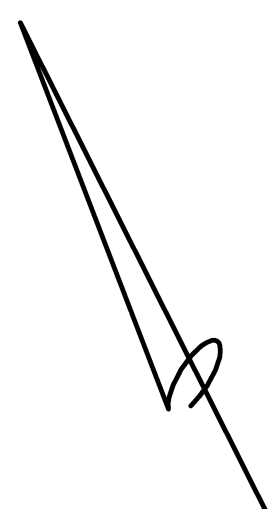
The attachments requested in the RFP are for sample projects. The 40-page maximum (20 sheets front and back) is meant to include the Cover, table of contents, cover letter, resumes, and the core or heart of the proposal.

In addition, it is appropriate and preferred to submit fee schedules and estimate separately in a pdf format marked "Fee Proposal." Please disregard the requirement to send the Fee Proposal as a separate hard copy.

2. EXHIBIT D: Topographic Map of Well Site (Bowman & Williams, 2014).

The Country Club well site topography is included in this addendum.

EXHIBIT D
TOPOGRAPHIC MAP OF WELL SITE



ABBREVIATIONS

DWY	DRIVEWAY
FB	FACE OF BERM
FD	FOUND
FH	FIRE HYDRANT
FL	FLOWLINE
INVT	INVERT
IP	IRON PIPE
JP	JOINT UTILITY POLE
LS	LAND SURVEYOR
MB	MAILBOX
NT	NO TAG
OH	OVERHEAD
±	PLUS OR MINUS
RSR	RISER
SSMH	SANITARY SEWER MANHOLE
TBM	TEMPORARY BENCHMARK
WM	WATER METER
WV	WATER VALVE

LEGEND

---	CONTOUR (MAJOR)
---	CONTOUR (MINOR)
-X-	FENCE LINE
+	FIRE HYDRANT
●	FOUND MONUMENT AS NOTED
G	GAS LINE
⊖	GY ANCHOR
⊕	JOINT UTILITY POLE
OH	OVERHEAD UTILITY LINE(S)
---	PROPERTY LINE
SS	SANITARY SEWER
△	SET RANDOM NAIL
⊕	SITE BENCHMARK
+46.21	SPOT ELEVATION
●	TREE
W	WATER LINE
⊕	WATER VALVE

BASIS OF ELEVATIONS

THE BASIS OF ELEVATIONS FOR THIS SURVEY IS NATIONAL GEODETIC SURVEY BENCHMARK DESIGNATION: G 1237
 PID: GU2276
 STATE/COUNTY: CA/SANTA CRUZ
 USGS QUAD: SOQUEL (1994)
 ELEVATION = 125.18 NAVD 88

STATION DESCRIPTION: 9.2 MI E FROM SANTA CRUZ, 9.2 MILES EAST ALONG THE SOUTHERN PACIFIC COMPANY RAILROAD FROM THE WEST CLIFF DRIVE OVERPASS AT SANTA CRUZ, AT THE CROSSING OF CLUB HOUSE DRIVE, IN THE TOP AND 0.5 FOOT NORTHWEST OF THE SOUTHEAST CORNER OF A CONCRETE CATCH BASIN WHICH IS IN THE CURB RETURN OF A CURB BETWEEN THE DRIVE AND SUMNER AVENUE, 31 FEET SOUTHEAST OF THE CENTER LINE OF THE SOUTHEAST LANES OF THE DRIVE, 109.5 FEET NORTHEAST AND ACROSS SUMNER AVENUE FROM THE NORTHEAST RAIL, 36 FEET NORTHEAST OF THE CENTER LINE OF THE AVENUE, ABOUT 1 FOOT HIGHER THAN THE TRACK AND 1/2 FOOT HIGHER THAN THE DRIVE.

RECORD DATA

(100)' RECORD DATA 36-M-10

BASIS OF BEARINGS

THE BASIS OF BEARINGS FOR THIS SURVEY IS THE SOUTHEAST SIDELINE OF BALTUSROL DRIVE AS SHOWN ON TRACT NO. 249, COUNTRY CLUB PARK UNIT NO. 4, FILED IN VOLUME 36 OF MAPS AT PAGE 10, SANTA CRUZ COUNTY RECORDS, AND ESTABLISHED FROM MONUMENTS FOUND AS SHOWN = N 26°41'30" E

SITE BENCHMARK

THE SITE BENCHMARK FOR THIS SURVEY IS PT# 207, SET TBM 'X' ON TOP OF PAD
 ELEV=198.57, (NAVD 88)

APN 053-221-11

REVISED			
BOWMAN & WILLIAMS CONSULTING CIVIL ENGINEERS 1011 CEDAR STREET SANTA CRUZ, CA 95060 (831) 426-3560		TOPOGRAPHIC MAP OF THE BALTUSROL DRIVE SITE	
SCALE 1" = 20'		DRAWN DLN	JOB NO. 25575
DATE MAY 12, 2014		CHECKED BFH	INDEX APTOS RO. 4
DESIGN		DWG NAME 25575TPO	FILE NO. 25575
			SHEET TP-1
			OF 1



C:\B&W\25575\25575 Soquel Creek MB_Baltusrol site.dwg, 5/12/2014 2:44:21 PM, kfp,jac3